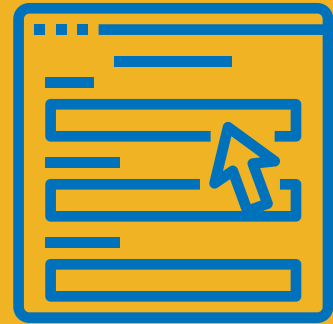


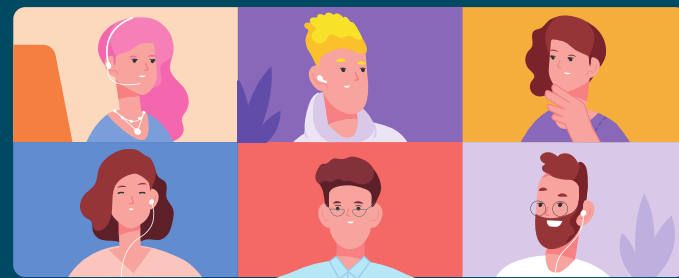
Present a Case @ SoC ECHO

1 PREPARE AND SUBMIT CASE PRESENTATION



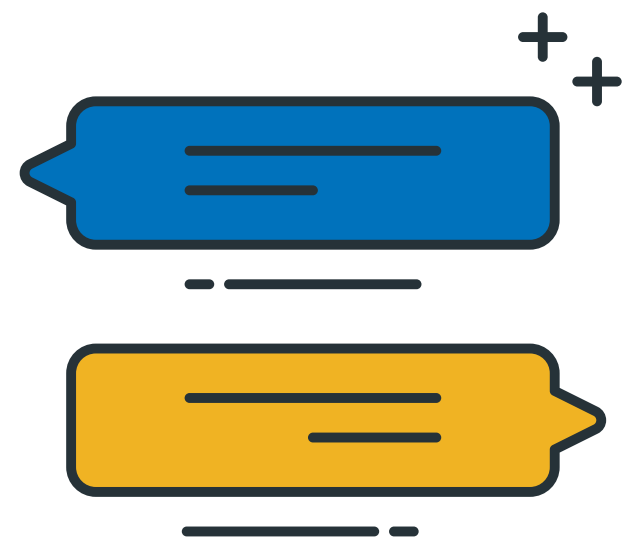
- Complete case referral form
- Email form to CIP Team
- Meet with CIP team to finalize information
- Schedule case presentation

2 PRESENT CASE



- Present case to SoC ECHO network during a session

3 AFTER PRESENTATION



- CIP shares typed comprehensive recommendations to presentation team
- Case presentation team follows up with appropriate local/regional care coordinators to discuss recommendations
- Case presentation team reports outcomes to SoC ECHO @ 3 months after presentation